



# DCC Polyclonal Antibody

<b>Catalog No</b>	YP-Ab-00373
<b>Isotype</b>	IgG
<b>Reactivity</b>	Human;Mouse;Rat
<b>Applications</b>	WB;IF;ELISA
<b>Gene Name</b>	DCC
<b>Protein Name</b>	Netrin receptor DCC
<b>Immunogen</b>	The antiserum was produced against synthesized peptide derived from human DCC. AA range:441-490
<b>Specificity</b>	DCC Polyclonal Antibody detects endogenous levels of DCC protein.
<b>Formulation</b>	Liquid in PBS containing 50% glycerol, 0.5% BSA and 0.02% sodium azide.
<b>Source</b>	Polyclonal, Rabbit,IgG
<b>Purification</b>	The antibody was affinity-purified from rabbit antiserum by affinity-chromatography using epitope-specific immunogen.
<b>Dilution</b>	Western Blot: 1/500 - 1/2000. Immunofluorescence: 1/200 - 1/1000. ELISA: 1/20000. Not yet tested in other applications.
<b>Concentration</b>	1 mg/ml
<b>Purity</b>	≥90%
<b>Storage Stability</b>	-20°C/1 year
<b>Synonyms</b>	DCC; IGDCC1; Netrin receptor DCC; Colorectal cancer suppressor; Immunoglobulin superfamily DCC subclass member 1; Tumor suppressor protein DCC
<b>Observed Band</b>	160kD
<b>Cell Pathway</b>	Membrane; Single-pass type I membrane protein.
<b>Tissue Specificity</b>	Found in axons of the central and peripheral nervous system and in differentiated cell types of the intestine. Not expressed in colorectal tumor cells that lost their capacity to differentiate into mucus producing cells.
<b>Function</b>	disease:Colorectal tumors that lost their capacity to differentiate into mucus producing cells uniformly lack DCC expression. Inactivation of DCC due to allelic deletion and/or point mutations may cause both lymphatic and hematogenous metastasis of esophageal squamous cell carcinomas.,function:Receptor for netrin required for axon guidance. Mediates axon attraction of neuronal growth cones in the developing nervous system upon ligand binding. Its association with UNC5 proteins may trigger signaling for axon repulsion. It also acts as a dependence receptor required for apoptosis induction when not associated with netrin ligand. Implicated as a tumor suppressor gene.,PTM:Ubiquitinated; mediated by SIAH1 or SIAH2 and leading to its subsequent proteasomal degradation.,similarity:Belongs to the immunoglobulin superfamily. DCC



family.,similarity:Contains 4 Ig-like C2-type (immunoglobulin-like)

## Background

This gene encodes a netrin 1 receptor. The transmembrane protein is a member of the immunoglobulin superfamily of cell adhesion molecules, and mediates axon guidance of neuronal growth cones towards sources of netrin 1 ligand. The cytoplasmic tail interacts with the tyrosine kinases Src and focal adhesion kinase (FAK, also known as PTK2) to mediate axon attraction. The protein partially localizes to lipid rafts, and induces apoptosis in the absence of ligand. The protein functions as a tumor suppressor, and is frequently mutated or downregulated in colorectal cancer and esophageal carcinoma. [provided by RefSeq, Oct 2009],

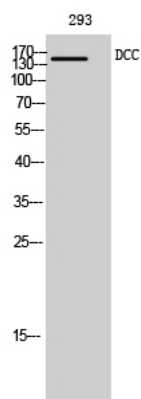
## matters needing attention

Avoid repeated freezing and thawing!

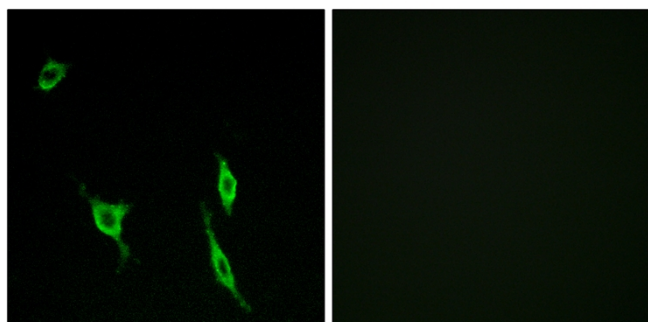
## Usage suggestions

This product can be used in immunological reaction related experiments. For more information, please consult technical personnel.

## Products Images



Western Blot analysis of 293 cells using DCC Polyclonal Antibody diluted at 1:500



Immunofluorescence analysis of LOVO cells, using DCC Antibody. The picture on the right is blocked with the synthesized peptide.